

GP-100

NEW VERSION

Stroke: 1.00 in. (25.4 mm)

Stroke limit options available

Gripping Force Per Jaw (Close) @ 100PSI (6.8bar): 136.8 lbs. (62.0 kgf)

Gripping Force Per Jaw (Open) @ 100PSI (6.8bar): 216.5 lbs. (98.2 kgf)

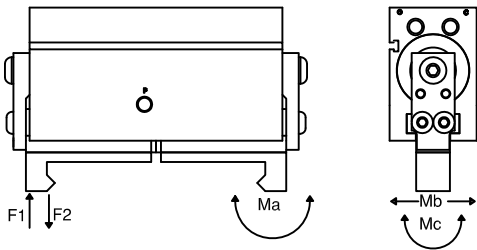
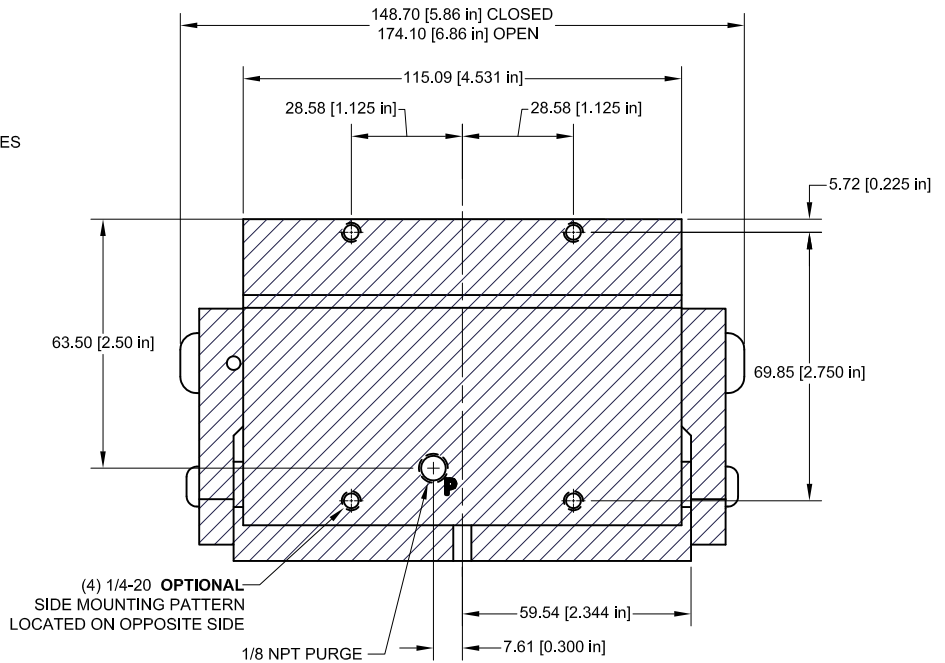
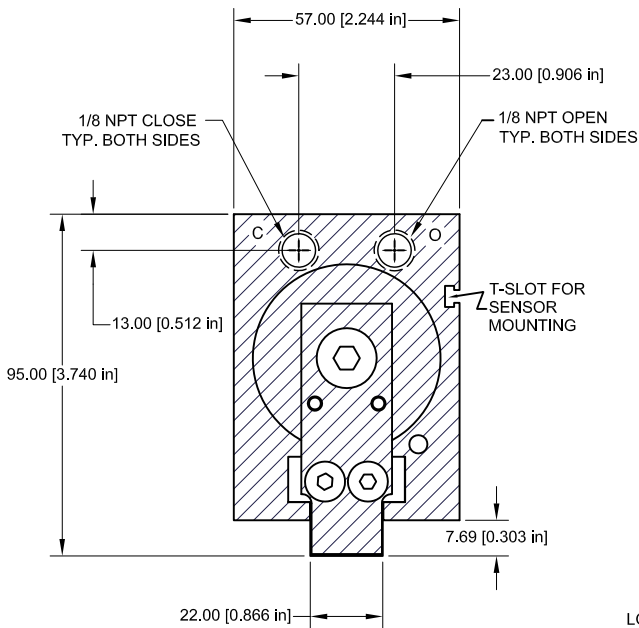
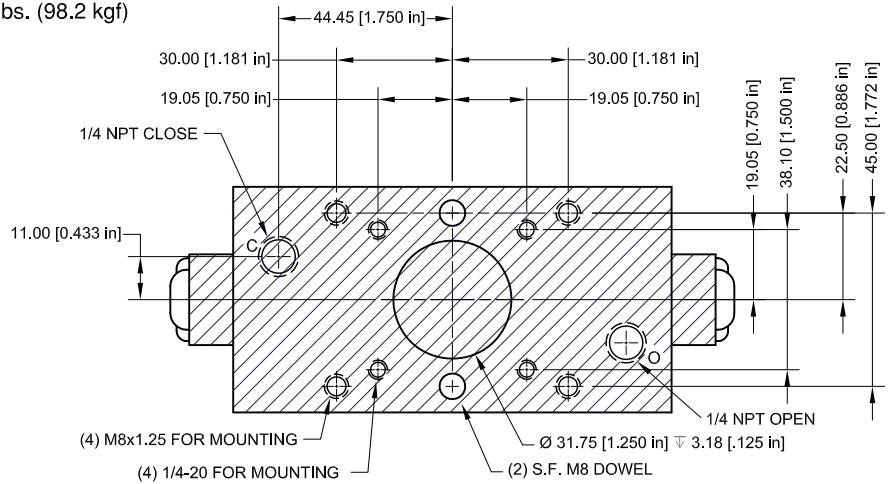
Approximate Weight: 3.75 lbs. (1700 g)

Operating Displacement: 2.4 cu. in. (39.3 cu. cm)

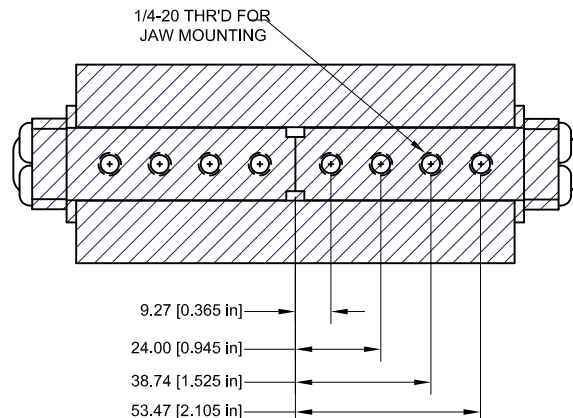
Maximum Operating Pressure: 120 PSI (8.3 bar)

Recommended Purge Pressure: 1/2 of operating pressure

- All mounting holes 1-1/2 diameter minimum thread depth.
- Jaw mounting holes are equipped with stainless steel thread inserts.
- Ports labeled "O" for open, "C" for close and "P" for purge.



$M_a = 648 \text{ in}^*\text{lbs} (750 \text{ kgf}^*\text{cm})$
 $M_b = 1080 \text{ in}^*\text{lbs} (1250 \text{ kgf}^*\text{cm})$
 $M_c = 1231 \text{ in}^*\text{lbs} (1400 \text{ kgf}^*\text{cm})$
 $F_1 = 246 \text{ lbs} (111.8 \text{ kgf})$
 $F_2 = 169 \text{ lbs} (77.0 \text{ kgf})$



GP-200

NEW VERSION

Stroke: 1.62in. (41.15 mm)

Stroke limit options available

Gripping Force Per Jaw (Close) @ 100PSI (6.8bar): 364.0 lbs. (165.1 kgf)

Gripping Force Per Jaw (Open) @ 100PSI (6.8bar): 443.0 lbs. (200.9 kgf)

Approximate Weight: 6.98 lbs. (3166 g)

Operating Displacement: 14.4 cu. in. (235.9 cu. cm)

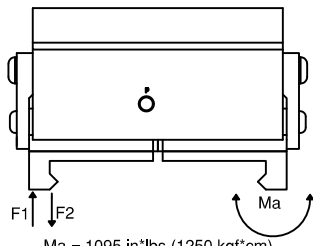
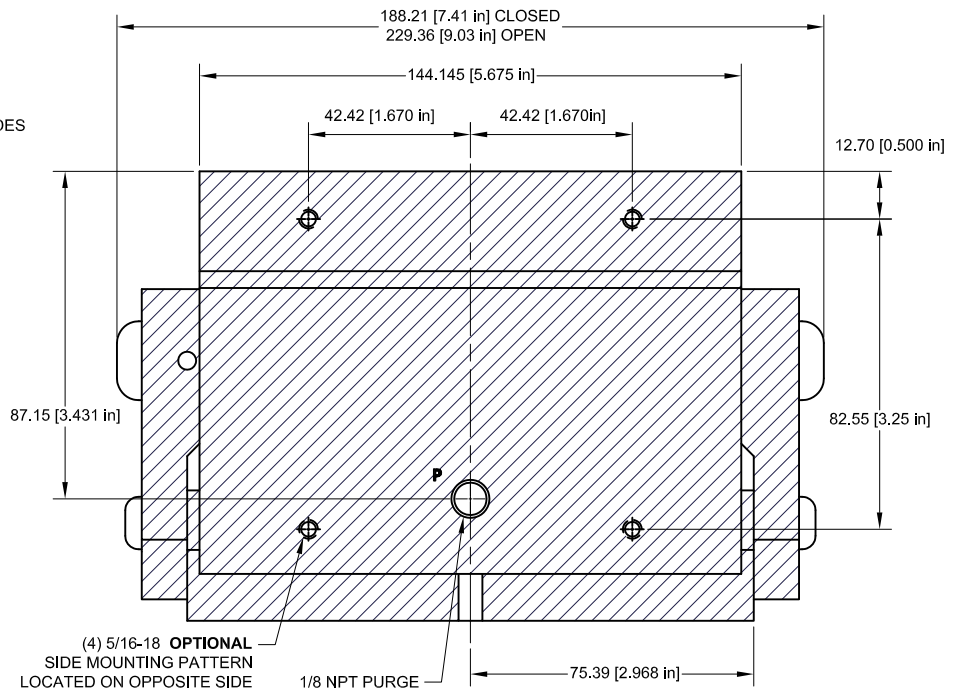
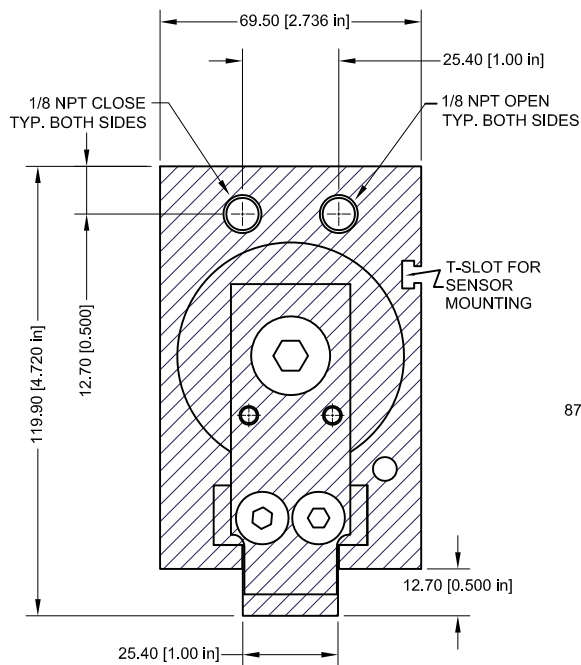
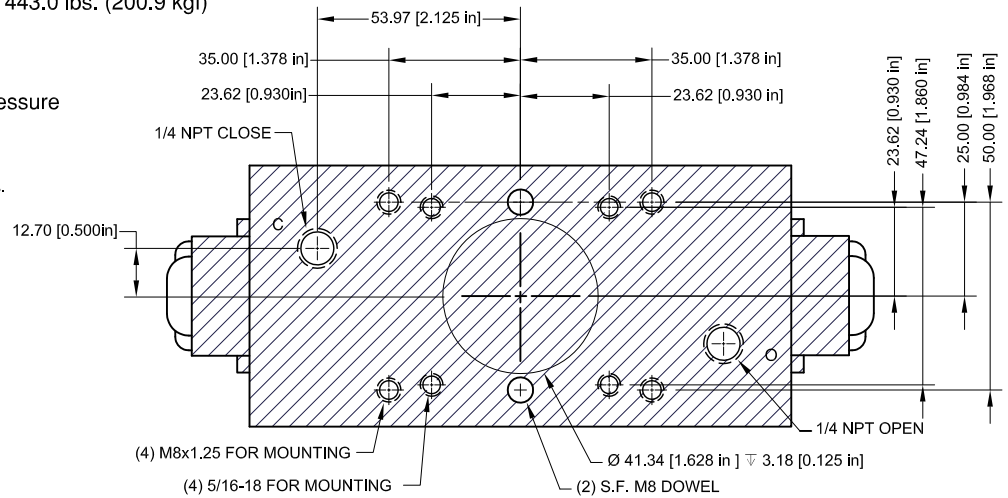
Maximum Operating Pressure: 120 PSI (8.3 bar)

Recommended Purge Pressure: 1/2 of operating pressure

- All mounting holes 1-1/2 diameter minimum thread depth.

- Jaw mounting holes are equipped with stainless steel thread inserts.

- Ports labeled "O" for open, "C" for close and "P" for purge.



Ma = 1095 in*lbs (1250 kgf*cm)

Mb = 1825 in*lbs (2100 kgf*cm)

Mc = 2020 in*lbs (2300 kgf*cm)

F1 = 750 lbs (340.9 kgf)

F2 = 556 lbs (252.5 kgf)

