

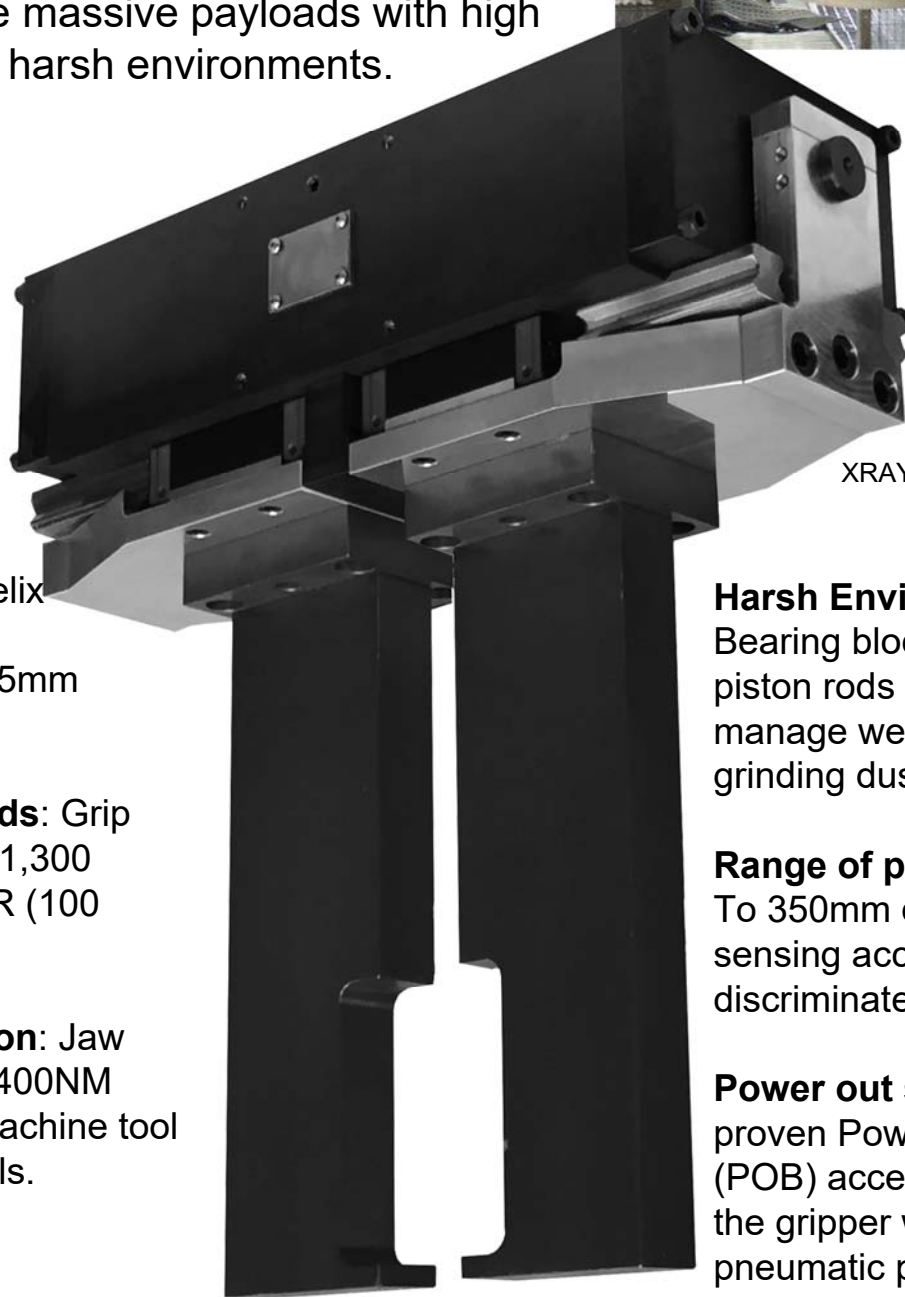
XRAY-S Grippers

Increase Productivity with Lower Cycle Times!

Precisely move massive payloads with high acceleration in harsh environments.



XRAY-S-2200



XRAY-S-5800

Precise: Dual Helix Synchronization Centers to $\pm 0.025\text{mm}$ ($\pm 0.001\text{in}$).

Massive Payloads: Grip force to 5,800N (1,300 pounds) at 7 BAR (100 PSI) each jaw.

High Acceleration: Jaw torque of up to 1400NM (840 ft-lbs) via machine tool linear bearing rails.

Harsh Environments:

Bearing blocks and piston rods are sealed to manage weld spatter and grinding dust.

Range of payload sizes:

To 350mm of stroke with sensing accessories to discriminate sizes.

Power out safe: The proven Power Out Brake (POB) accessory. Locks the gripper when pneumatic power is lost.

ZAYTRAN
AUTOMATION
www.grippers.com

Distributed by: **FESTO**
1-800-993-3786
www.festo.com

XRAY-S-2200

Parallel Opening/Closing Type Gripper 2 Finger 2200N

Model Nomenclature: XRAY-S-2200-ST-XX-YY-ZZ-PP

ST Stroke (mm): 100

200

350

XX Fail Safe: Blank=None,
POB=Power Off Brake

YY Sensing Kit: Blank=None,
P12=Dual 12mm Barrel Prox. Mounting Kit,
PFA=Analog Output Feedback Sensor,
PFD=Digital Output Feedback Sensor.

ZZ Seal Type: Blank=Buna,
V=Viton

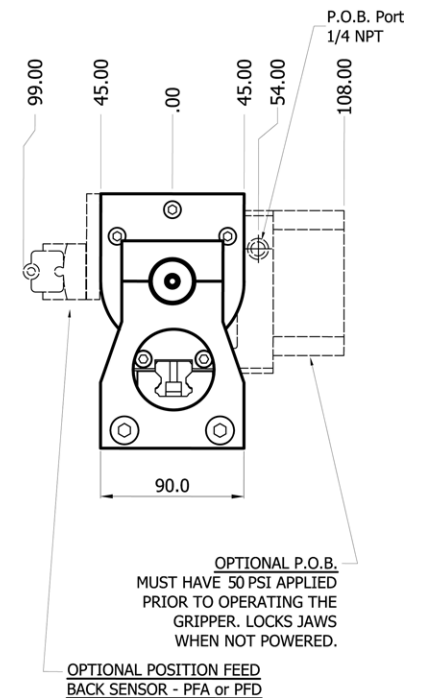
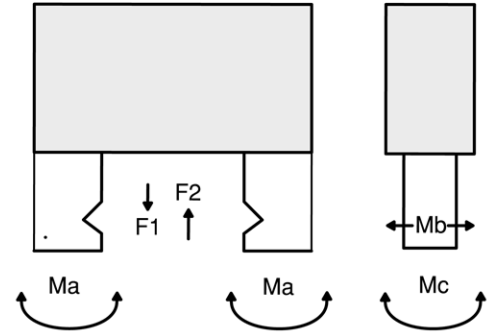
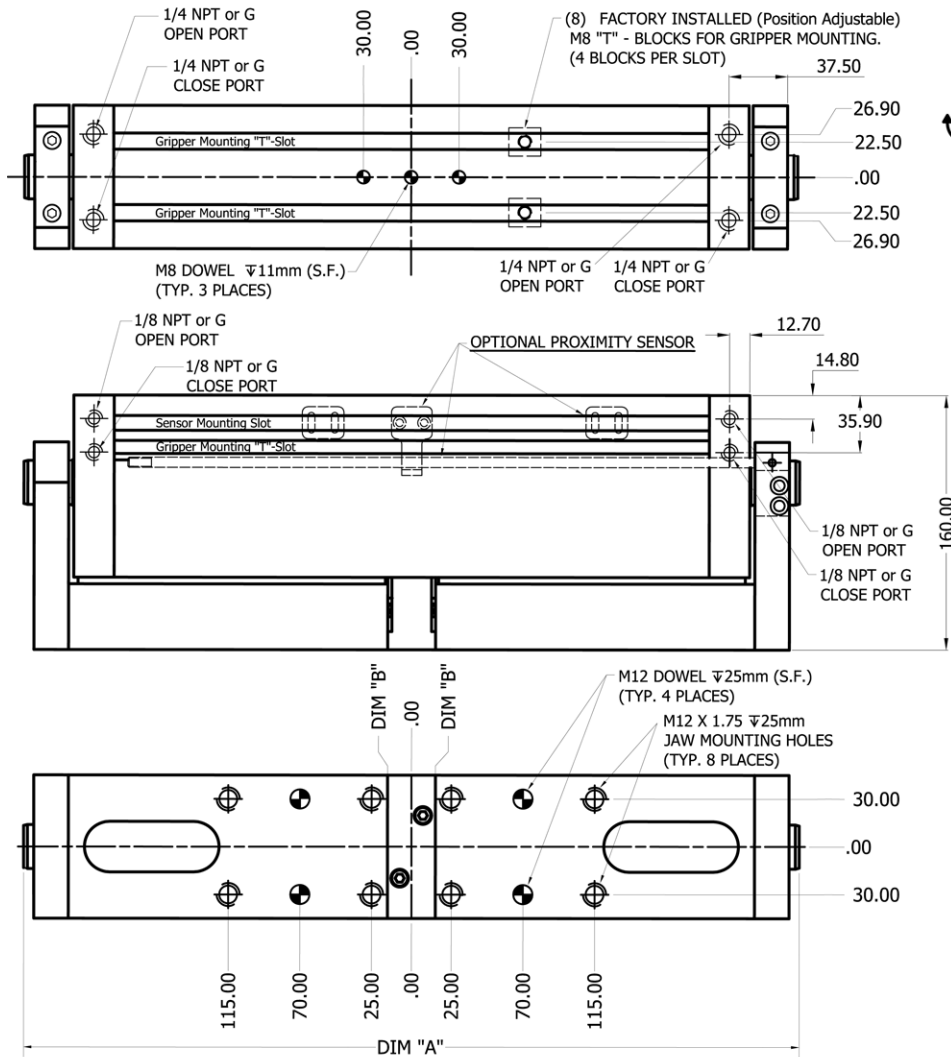
PP Port Type: Blank=NPT,
XG=G Class

Example: XRAY-S-2200-200-POB

XRAY-S-5800-200 with Power Off Brake, NPT Ports.

Force, Each Jaw:	2200N (495 lbs.)*
Jaw Torque Ma:	650NM (476 ft-lb)
Jaw Torque Mb:	700NM (515 ft-lb)
Jaw Torque Mc:	620NM (456 ft-lb)
Jaw Force F1:	895kg (2000 lbs.)
Jaw Force F2:	726kg (1600 lbs)
Max. Pressure:	17.3 BAR (250 psi)

*-at 7 BAR (100 psi)



STROKE	STROKE LENGTH	WEIGHT	DIM "A"		DIM "B"	
			CLOSE	OPEN	CLOSE	OPEN
100	100mm (3.94")	13.6 kg (30 lbs)	387.4mm	490.4mm	15.0mm	65.0mm
			487.0mm	690.0mm	15.0mm	115.0mm
200	200mm (7.87")	15 kg (33 lbs)	637.0mm	990.0mm	15.0mm	190.0mm
			487.0mm	690.0mm	15.0mm	115.0mm

XRAY-S-5800

Parallel Opening/Closing Type Gripper 2 Finger 5800N

Model Nomenclature:

XRAY-S-5800-200-XX-YY-PP

XX Fail Safe: Blank=None,
POB=Power Off Brake

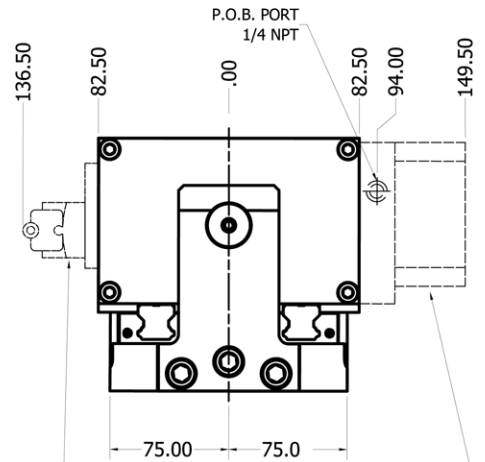
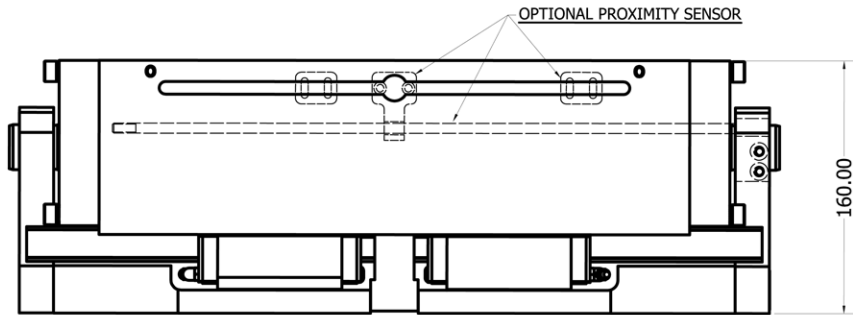
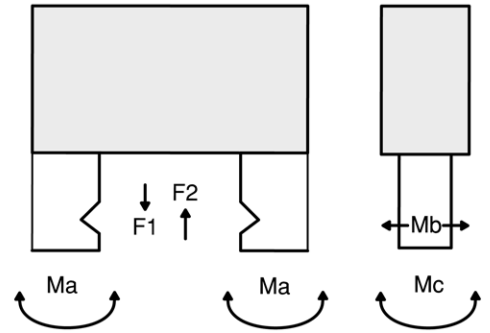
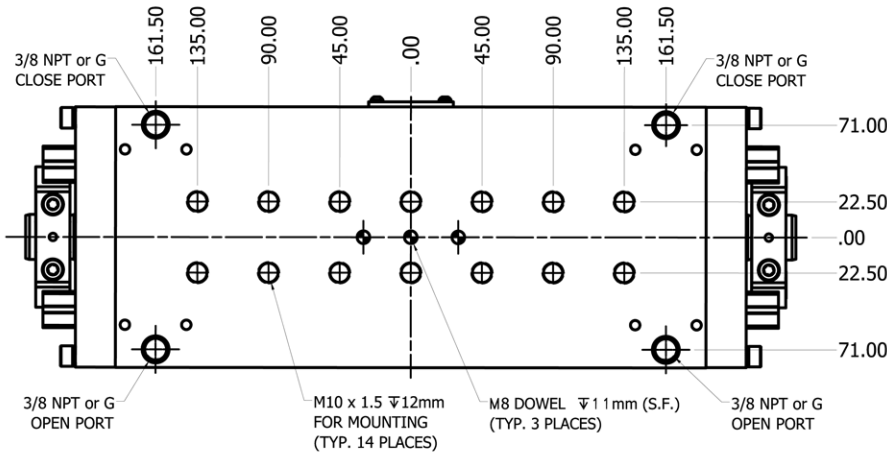
YY Sensing Kit: Blank=None,
P12=Dual 12mm Barrel Prox. Mounting Kit,
PFA=Analog Output Feedback Sensor,
PFD=Digital Output Feedback Sensor.

PP Port Type: Blank=NPT,
XG=G Class

Example: XRAY-S-5800-200-POB-P12
XRAY-S-5800-200 with Power Off Brake, 12mm Barrel Prox.
Mounting Kit, NPT Ports. (Viton Seals Standard)

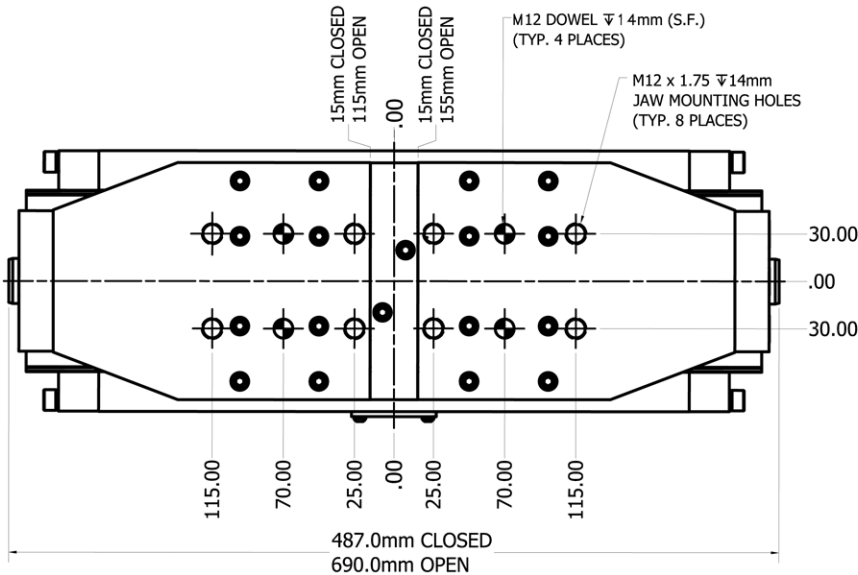
Stroke :	200mm
Weight :	27.7kg (61 lbs.)
Force, Each Jaw:	5800N (1300 lbs.)*
Jaw Torque Ma:	1300NM (950 ft-lb)
Jaw Torque Mb:	1400NM (1020 ft-lb)
Jaw Torque Mc:	815NM (600 ft-lb)
Jaw Force F1:	1790kg (4000 lbs.)
Jaw Force F2:	1452kg (3200 lbs)
Max. Pressure:	8.3 BAR (120 psi)

*-at 7 BAR (100 psi)

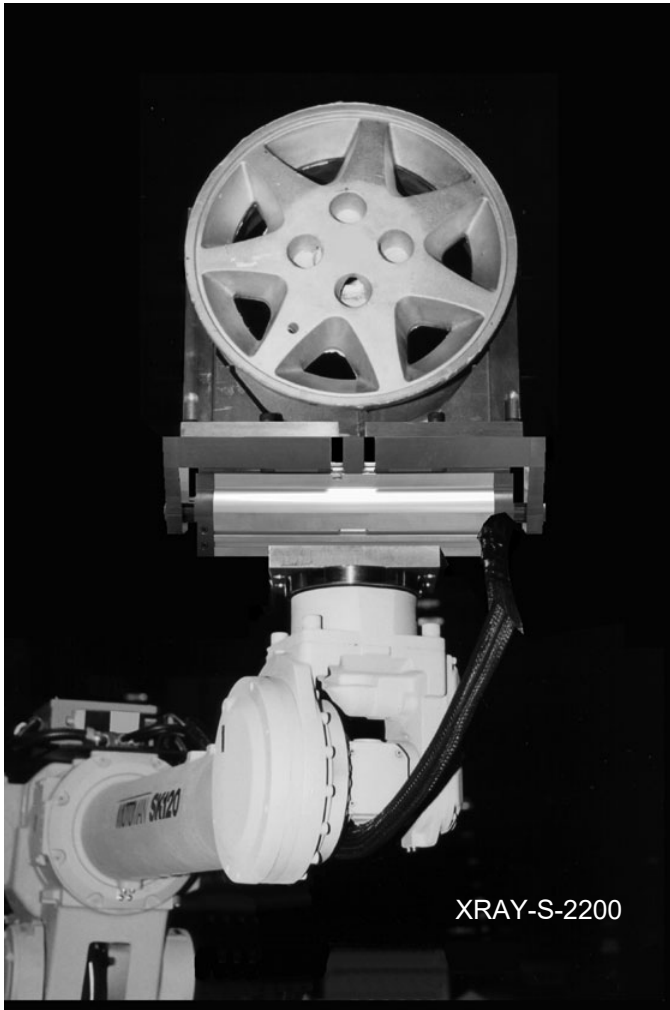


OPTIONAL P.O.B.
MUST HAVE 50 PSI APPLIED
PRIOR TO OPERATING THE
GRIPPER. LOCKS JAWS
WHEN NOT POWERED.

OPTIONAL POSITION FEED
BACK SENSOR - PFA or PFD



XRAY-S Grippers



XRAY-S-2200



XRAY-S-2200



XRAY-S-5800

ZAYTRAN
AUTOMATION
www.grippers.com

Distributed by: **FESTO**
1-800-993-3786
www.festo.com